

A new species, *Euconnus* (*Euconnus*) *hosakae* sp. nov. (Coleoptera: Staphylinidae: Scydmaeninae) from Honshu, Japan

メタデータ	言語: English 出版者: 公開日: 2021-03-02 キーワード (Ja): キーワード (En): <i>Euconnus</i> , Scydmaeninae, Staphylinidae, Coleoptera, Japan 作成者: HOSHINA, Hideto, FUKUTOMI, Hirozaku, WATANABE, Kohei メールアドレス: 所属:
URL	http://hdl.handle.net/10098/00028611

A new species, *Euconnus (Euconnus) hosakae* sp. nov. (Coleoptera: Staphylinidae: Scydmaeninae) from Honshu, Japan

Hideto Hoshina*
(福井大学 教育学部
人文社会系部門 理科教育領域)

Hirokazu Fukutomi**
(石川県ふれあい昆虫館)

Kohei Watanabe**
(石川県ふれあい昆虫館)

Introduction

The genus *Euconnus* Thomson, 1859 belongs to the tribe Glandulariini of the subfamily Scydmaeninae of the family Staphylinidae (Newton, 2015). In Japan, twenty-five species of *Euconnus* are recorded (Sharp, 1874, 1886; Reitter, 1891; Csiki, 1919; Franz, 1976; O'Keefe & Li, 1998; Hoshina & Arai, 2003; Hoshina et al., 2003; Hoshina, 2004a, 2004b; Hoshina & Nagano, 2005; Hoshina, 2006, 2007, 2013, 2015; Hoshina & Nakata, 2018; Hoshina, 2019a, 2019b, 2020).

Recently, second and third authors collected three specimens of one species belonging to subgenus *Euconnus* of the genus *Euconnus* from Ishikawa Pref., Honshu, Japan. Our careful examinations showed that the species is a new member of the subgenus *Euconnus*. In this paper, we describe the new species under the name, *Euconnus (Euconnus) hosakae* sp. nov.

The holotype designated in this study is deposited in the collection of the Ehime University Museum, Matsuyama, Japan (EUMJ). Paratypes are preserved in University of Fukui, Fukui, Japan (FU).

Before going further, we wish to express our sincere thanks to Mr. Martin Brendell (The Natural History Museum, London) for giving us an opportunity to examine a type specimen of *Scydmaenus japonicus* Sharp, 1874.

(Key words: *Euconnus*, Scydmaeninae, Staphylinidae, Coleoptera, Japan)

* Hideto Hoshina
(Faculty of Education, Humanities and Social Sciences, University of Fukui, Fukui Pref., 910-8507, Japan)

** Hirokazu Fukutomi and Kohei Watanabe
(Ishikawa Insect Museum, Hakusan City, Ishikawa Pref., 920-2113, Japan)

Description

Genus *Euconnus* Thomson, 1859

Euconnus (Euconnus) hosakae Hoshina, Fukutomi, & Watanabe, sp. nov.

[Japanese name: Hosaka-hime-kokemushi]

(Figs. 1-5)

Diagnosis. Body length 1.5 mm. Dorsum dark reddish brown. Head and elytra very sparsely pubescent. Pronotum moderately pubescent. Hind wings normal. Aedeagus a little slender in ventral and dorsal views.

Measurement of holotype: Body 1.51 mm in length; head 0.25 mm in length and 0.30 mm in width; pronotum 0.42 mm in length and 0.38 mm in width; elytra 0.90 mm in length and 0.70 mm in width.

Male and *female*. Coloration. Dorsum of body almost concolorous, dark reddish brown; maxillary palpus light brown; antennae brownish; meso- and metaventrites dark reddish brown except for a black median carina of mesoventrite; abdominal ventrites brown; legs brown with light brown tarsi; pubescence of dorsum yellowish light brown.

Body 1.51–1.58 mm in length, about 2.2 times as long as wide.

Head not showing sexual dimorphism, about 0.81 times as long as wide, and very sparsely pubescent (Fig. 1); length of head about 0.57 times as long as that of pronotum; width of head about 0.82 times as long as that of pronotum; surface of head smooth and almost without discal punctures; setal socket punctures very minute or indistinct; vertex simply and very feebly convex; eyes oval, about 2.3 times as long as wide in dorsal view; antennomeres slender in general; antennomere 10 almost as long as wide; other antennomeres longer than wide; antennomere 11 about 1.7 times as long as wide (Fig. 2).

Pronotum about 1.1 times as long as wide, widest at near base, smooth, wholly convex, moderately pubescent (Fig. 1), and almost without discal punctures; length of pronotum about 0.48 times as long as that of elytra; width of pronotum about 0.54 times as long as that of elytra; anterior and posterior margins almost straight; lateral margins very weakly curved; setal socket punctures very minute or indistinct; two antebasal pits strongly impressed.

Elytra about 1.3 times as long as wide, widest at about basal 2/5, smooth, very sparsely pubescent (Fig. 1), and almost without discal punctures; setal socket punctures very minute or indistinct; each elytron with two basal elytral fovea near the middle of anterior margin.

Hind wings normal.

Legs normal shape in the genus.

Metaventrite pubescent, smooth, weakly convex, and almost impunctate; abdominal ventrites pubescent, weakly microreticulate, and almost impunctate.

Male. Aedeagus a little slender in ventral and dorsal views (Figs. 3 and 4); median lobe about 1.9 times as long as wide in ventral and dorsal views (Figs. 3 and 4), and pointed apically in lateral view (Fig. 5); both parameres almost symmetrical and slender (Figs. 3 and 4); each paramere bearing a few fine apical setae and strongly curved in lateral view (Fig. 5).

Distribution. Japan: Honshu (Ishikawa Pref.).

Type series. Holotype: Nishiodaira, Mt. Iouzen, Kanazawa City, Ishikawa Pref., Honshu, Japan, 16. vi. 2020, H. Fukutomi leg. (EUMJ). Paratypes: 1♂1♀, same locality as holotype, 17. vii. 2020, K. Watanabe leg. (FU).

Additional materials of related species examined. ♂, holotype of *Euconnus (Euconnus) ohnoensis* Hoshina, 2006, Tsumadaira Wetland, Minami-rokuroshi, Ōno city, Fukui Pref., Honshu, Japan, 27. vi. 2003, H. Hoshina leg. (preserved in the collection of Museum of Nature and Human Activities, Hyōgo) (Figs. 6-8); 1♂, syntype of *Scydmaenus japonicus* Sharp, 1874, Urakami, Nagasaki Pref., Kyushu, Japan (preserved in the collection of The Natural History Museum, London) (Figs. 9-11).

Notes. *Euconnus (Euconnus) hosakae* sp. nov. is similar to *E. (E.) ohnoensis* Hoshina, 2006 in appearance, but can be separated from it by having the pronotum moderately pubescent. In contrast, *E. (E.) ohnoensis* has the pronotum sparsely pubescent. Moreover, *E. (E.) hosakae* sp. nov. also resembles *E. (E.) japonicus* (Sharp, 1874), but can be distinguished from it by having the relatively robust aedeagus (Figs. 3-5). In contrast, *E. (E.) japonicus* has the slender aedeagus (Figs. 9-11).

Etymology. This specific name is dedicated to Miss Miyuki Hosaka who is from the type locality, Kanazawa City, and a heroine of a Japanese computer game, *Sentimental Graffiti*.

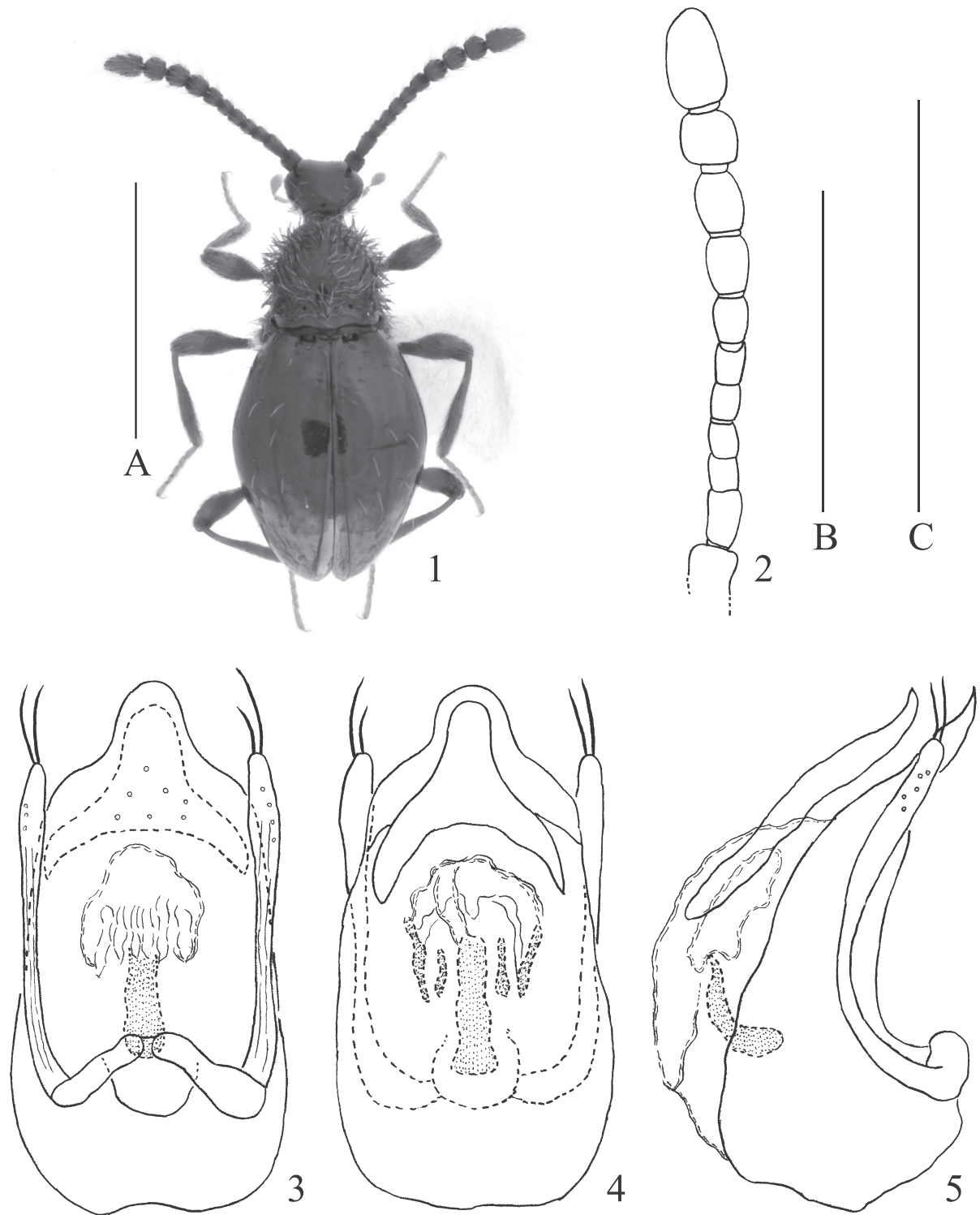
Abstract

One new species of the genus *Euconnus* (Coleoptera: Staphylinidae: Scydmaeninae), *E. (Euconnus) hosakae* sp. nov., is described from Ishikawa Pref., Honshu, Japan. Consequently, the numbers of Japanese species of *Euconnus* becomes twenty-six.

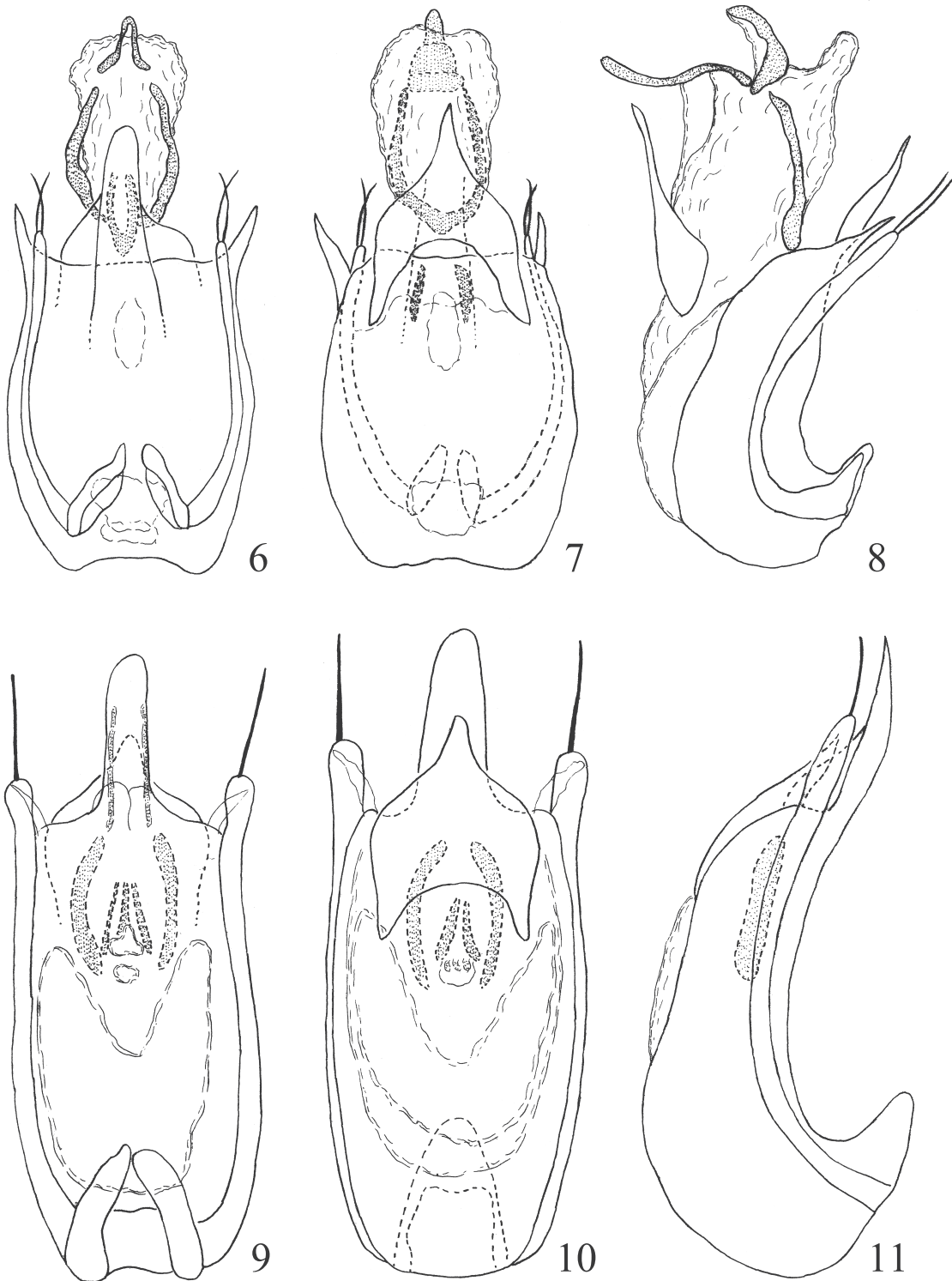
References

- Csiki, E., 1919. Scydmaenidae. In: Schenkling, S. (ed.). *Coleopterorum Catalogus*, pars 12: 1–106. W. Junk, Berlin.
- Franz, H., 1976. Neue Scydmaeniden aus Japan, sowie Bemerkungen zu bekannten Arten. *Entomologische Blätter für Biologie und Systematik der Käfer*, **72**: 51–60.
- Hoshina, H., 2004a. A new species and taxonomic note on the genus *Euconnus* (Coleoptera: Scydmaenidae) from Honshu, Japan. *The Memoirs of the Research and Education center for Regional Environment, Fukui University*, (11): 17–22.
- Hoshina, H., 2004b. First new species of the subgenus *Cladoconnus* of the genus *Euconnus* from Japan (Coleoptera: Scydmaenidae). *Entomological Problems*, **34**: 119–123.
- Hoshina, H., 2006. Notes on the genus *Euconnus* (Insecta: Coleoptera: Scydmaenidae) from Tsumadaira Wetland, Fukui Pref., Honshu, Japan. *Ciconia, Fukui*, **11**: 44–48.
- Hoshina, H., 2007. A new species of the genus *Euconnus* (Coleoptera: Scydmaenidae) from Fukui Pref., Honshu, Japan. *The Memoirs of the Research and Education Center for Regional Environment, Fukui University*, (14): 17–22.
- Hoshina, H., 2013. New record of the subfamily Scydmaeninae (Coleoptera, Staphylinidae) from Kumejima Is., the Ryukyus, Japan, with description of a new species. *Japanese Journal of systematic Entomology*, **19**: 285–288.

- Hoshina, H., 2015. A new species of the genus *Euconnus* (Coleoptera: Staphylinidae: Scydmaeninae) from Northern Kyushu, Japan. *Japanese Journal of systematic Entomology*, **21**: 195–197.
- Hoshina, H., 2019a. Seven new species of the subfamily Scydmaeninae (Coleoptera: Staphylinidae) from Japan. *The Memoirs of the Research and Education Center for Regional Environment, University of Fukui* (25): 49–65.
- Hoshina, H., 2019b. Taxonomic note on the genus *Euconnus* (Coleoptera: Staphylinidae: Scydmaeninae) from Japan (II). *Japanese Journal of systematic Entomology*, **25**: 97–100.
- Hoshina, H., 2020. Three new species of the genus *Euconnus* (Coleoptera: Staphylinidae: Scydmaeninae) from Shikoku, Japan. *Memoirs of the Faculty of Education, Humanities and Social Sciences, University of Fukui*, (4): 67–75.
- Hoshina, H., & S. Arai, 2003. Taxonomic note on the genus *Euconnus* (Coleoptera: Scydmaenidae) from Japan. *Memoirs of the Faculty of Education and Regional Studies, Fukui University, Series II (Natural Science)*, (55): 11–12.
- Hoshina, H., S. Arai, & H. Ushijima, 2003. Descriptions of two new species of the genus *Euconnus* (Coleoptera: Scydmaenidae) from Japan. *The Entomological Review of Japan*, **58**: 27–33.
- Hoshina, H., & M. Nagano, 2005. Description of a new species of the genus *Euconnus* (Coleoptera: Scydmaenidae) from Niigata Pref., Honshu, Japan. *Memoirs of the Faculty of Education and Regional Studies, Fukui University, Series II (Natural Science)*, (57): 1–5.
- Hoshina, H. & K. Nakata, 2018. Description of a new species of the genus *Euconnus* (Coleoptera, Staphylinidae, Scydmaeninae) from Central Honshu, Japan. *Elytra, New Series, Tokyo*, **8**: 219–222.
- Newton, F. A., 2015. Cyrtoscydmini Schaufuss, 1889 Replaced by Glandulariini Schaufuss, 1889 (Coleoptera: Staphylinidae: Scydmaeninae). *The Coleopterists Bulletin*, **69**: 758–759.
- O’Keefe, S. T. & K.-J. Li, 1998. Review of the Scydmaenidae (Coleoptera) of eastern Asia, with particular reference to *Scydmaenus*, and description of the first scydmaenid from Hainan Island, China. *Journal of the New York Entomological Society*, **106**: 150–162.
- Reitter, E., 1891. Neue Coleopteren aue Europa, den angrenzenden Ländern und Sibiren, mit Bemerkungen über bekannten Arten. Zwölfter Thei. *Deutsche Entomologische Zeitschrift*, **35**: 17–36.
- Sharp, D., 1874. The Pselaphidae and Scydmaenidae of Japan. *Transactions of the Entomological Society of London*, (1874): 105–129.
- Sharp, D., 1886. The Scydmaenidae of Japan. *Entomologist’s Monthly Magazine*, **23**: 46–51.



Figs. 1-5, *Euconnus (Euconnus) hosakae* sp. nov.
1, habitus. 2, antenna. 3, aedeagus, ventral view. 4, ditto, dorsal view.
5, ditto, lateral view. Scale A: 1 mm for Fig. 1. Scale B: 0.5 mm for
Fig. 2. Scale C: 0.1 mm for Figs. 3-5.



Figs. 6-8, *Euconnus (Euconnus) ohnoensis* Hoshina; 9-11, *E. (E.) japonicus* (Sharp). 6 and 9, aedeagus, ventral view. 7 and 10, ditto, dorsal view. 8 and 11, ditto, lateral view.